

# LAGOS STATE UNIVERSITY, OJO



## SUSTAINABILITY POLICY

2025

© Lagos State University 2025

LASU SDG Office  
Third Floor, Senate Building  
LASU, Ojo,  
Lagos

All rights reserved. No part of this publication may be reproduced, stored in a retrieval system, or transmitted in any means, electronic, mechanical, photocopy, recording, or otherwise, without the copyright owner's prior permission.

ISBN: **TBC**

A publication of Lagos State University  
P.M.B. 0001, LASU Post Office  
Ojo, Lagos, Nigeria

Published by LASU Press.  
LASU, Ojo,  
Lagos, Nigeria.

## Table of Contents

Foreword.....	4
Preface.....	5
Acknowledgement.....	6
Acronyms.....	7
1. Background.....	8
2. Purpose.....	9
3. Vision.....	9
4. Scope.....	10
5. Definitions.....	10
6. Philosophy.....	10
7. Institutional mechanisms.....	11
7.1. Governance and disciplinarity.....	11
7.2. General Course on Sustainability.....	11
7.3. Cross-disciplinarity.....	11
7.4. Power management.....	11
7.5. Education, Teaching and non-teaching interface.....	11
7.6. Incentives.....	11
7.7. Recycling and waste management.....	12
7.8. Student clubs and activities.....	12
7.9. Transportation.....	12
7.10. Awareness and Governance.....	12
7.11. Research.....	12
7.12. Campus.....	13
7.13. Procurement.....	13
7.14. Investment and Finance.....	13
7.15. Integration.....	13
8. Partnership and collaborations.....	13
9. Community engagement.....	13
10. Evaluation.....	14
11. Campus town halls and surveys.....	14
12. Annual ‘shout outs’.....	14
13. Sustainability reports.....	14
14. UI GreenMetric Ranking.....	14
15. LASU-SDG Champions.....	18
16. SDGs and Associated FDU (Faculties, Departments & Units).....	14
17. Initiative Mapping to SDGs.....	16
18. Conclusion.....	24
19. ANNEX I. Data collection form.....	25
20. ANNEX II. List of FDUs in the University.....	26
21. Thank you.....	28

## Foreword

Today, our environment is under an unrelenting assault by human activities. Unarguably, the scale of humans' destructive activities against the environment, exacerbated by the pervasive operations of global capitalism and its unbridled exploitation of raw materials and minerals, has now reached a tipping point, demanding that immediate action plans be taken to protect our environment and ensure its sustainability for us and the future generations. While the precarity of human-induced environmental destruction is not evenly distributed across nations, it cannot be denied that all humanity, irrespective of their place of abode, face imminent threat of self-destruction if nothing is done to change the course of their mindless assault on the environment.

It is in their bids to address this problem that governments, non-government organisations and the private sector have embarked on this laudable initiative to promote environmental sustainability. To the extent that the universities are pivotal in raising environment-friendly future leaders, Lagos State University is a committed partner institution with a track record of advocacy project and research and development endeavours that prioritize environmental sustainability, underscoring the premium it places on developing curricula that emphasize the urgency of environmental sustainability and the need for staff and students to develop a mindset of being environment-friendly. The University believes this is crucial to adopting a comprehensive and practical framework that protects the planet and raises eco-friendly community committed to environmental sustainability.

These projects will complement courses that have been designed to promote environmental literacy and enhance staff and students' sensibility to environmental issues. In other words, this Sustainability Policy has been developed to, among others, complement existing practices and strategy to promote environmental sustainability in the university and its immediate community, Lagos and Nigeria at large.

It is my hope that this policy will further help to benchmark the university's sustainability project against the global standards, help determine our strengths and challenges and, with the support of existing University structures, facilitate better coordination of its engagements with subnational, national, regional and global sustainable development projects.

I therefore invite students, staff, and our partners to engage this policy as an evolving document that will continually address this ominous threat to our wellbeing and the world at large.

**Professor Ibiyemi Ibilola OLATUNJI-BELLO, mni, fnli, NPOM**  
Vice Chancellor  
Lagos State University

## Preface

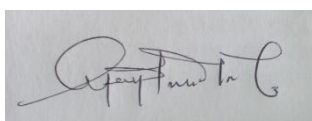
Lagos State University has always been at the forefront of academic excellence, research innovation, and community service. Situated in Lagos, the commercial heartbeat of Nigeria, the university is uniquely positioned to leverage its location for significant regional impact. The purpose of this Policy is to define the University's commitment to sustainable development and effective environmental stewardship.

The vision of the present administration of the University amongst others is to make the University a research, innovation and development hub for Lagos State and National Development and to ensure that academic and professional programmes are and remain accredited by relevant bodies.

This vision cannot be totally realized without the University's commitment to sustainable development and effective environmental stewardship. The University is therefore striving to contribute to a more sustainable future, locally and globally, through our education mission, impactful research, engagement and enterprise activities.

The University's comprehensive plan includes the development of state-of-the-art facilities, advanced technological infrastructure, and a solid governance framework. Our financial strategy will equally be robust, encompassing grants, corporate sponsorships, and revenue-generating activities to ensure sustainability.

Co-development and co-ownership with our staff and students are fundamental to our success. We must also ensure that we have due regard for equality and diversity. This Sustainability Policy therefore sets out the University's broad objectives in relation to sustainability matters and is supported by further detailed policies and plans.



**Professor Tayo Julius Ajayi**, MNIM, MNIT  
Director, Centre for Sustainable Development Goals (LASU-SDG),  
3rd Floor, Babatunde Raji Fashola Senate Building,  
Lagos State University (LASU), Ojo, Lagos.

## **Acknowledgement**

We would also like to thank the Vice Chancellor, Prof. Ibiyemi Olatunji-Bello, for her persistent support before and during the development of this Sustainability Policy. This is to also acknowledge all the students and staff who contributed to the development of this document during the series of institutional engagements – and ‘town halls.’

Special appreciation also goes to the leadership of the LASU SDG: Professor Tayo Julius Ajayi (the Director), Dr Oladele Teslim Ojuromi (Deputy Director), Dr Olayemi Soladoye (Deputy Director) and the staff: the D.R, Mrs Kemi Obadiah (Administrative Secretary), Mr Femi Olusoji Akerele. Mrs Folorunso Olayinka and Mr Agemo.

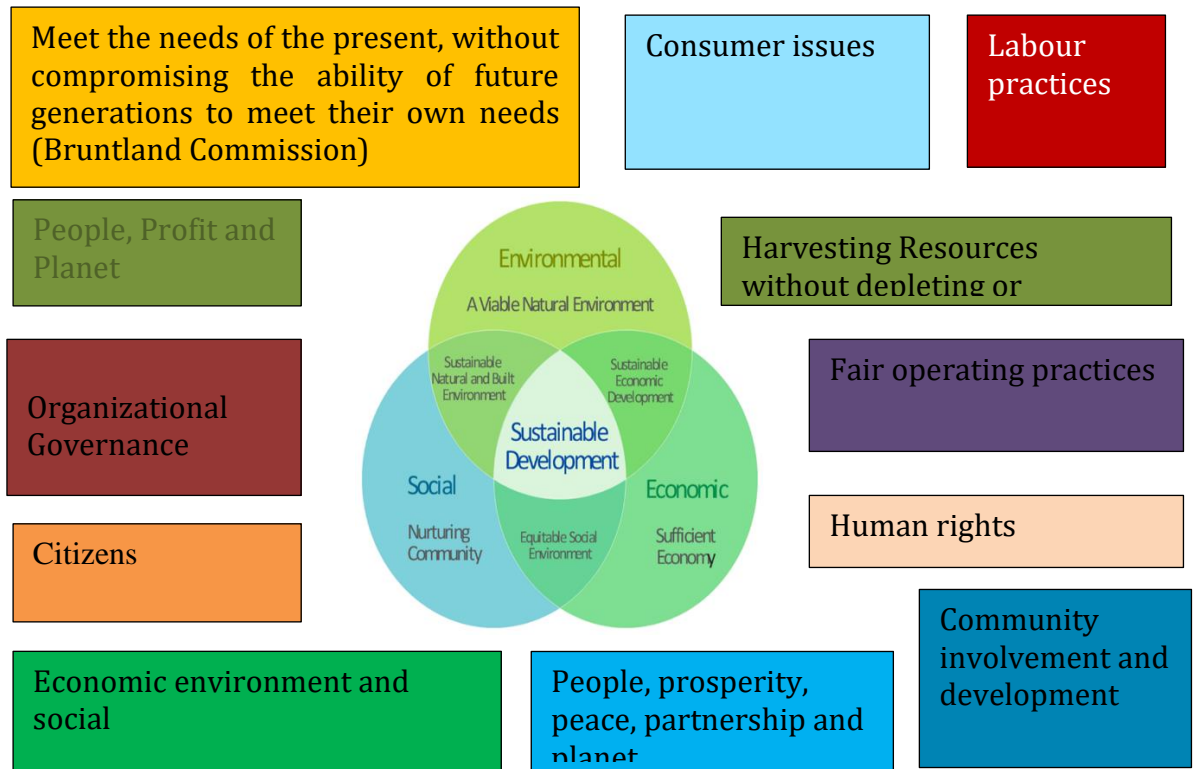
We want to especially appreciate Dr Tobi Oshodi of the Department of Political Science, LASU for his contribution towards the preparation of this Policy.

## Acronyms

ASR	Annual Sustainability Report
BSR	Biennial Sustainability Report
CESSED	Centre for Environmental and Sustainability Studies
LASU	Lagos State University
LASU-CESED	LASU Centre for Environment and Science Education
LASU-SDG	LASU Centre for Sustainable Development Goals
SDG	Sustainable Development Goals
UI	Universitas Indonesia (University of Indonesia)

## 1. Background

### What is sustainability?



In 1987, about three years after the establishment of Lagos State University (LASU), the United Nations published a report entitled *Our Common Future*. The Brundtland Report, as it is also known, offered a landmark definition of sustainability as “meeting the needs of the present without compromising the ability of future generations to meet their own needs.” Since the emergence of the report, many other reports and initiatives to ensure sustainability at the national, regional and international levels have followed. Indeed, the United Nations launched the Sustainable Development Goals (SDGs) in 2015, 28 years after the Brundtland Report. Although confronted with serious challenges, the deadline for the achievement of the SDG is 2030.

Before the initiation of the SDGs, however, governments and other institutions including universities have been engaging the issue of sustainability. At LASU, courses and programmes have been introduced to address different dimensions of the sustainability question. In 1994, for example, the University established the Centre for Environment and Science Education (LASU-CESE), now referred to as the Centre for Environmental and Sustainability Studies (CESSSED). In addition to relevant courses that speak to the subject matter in the social sciences, natural and health sciences, the University established a Faculty of Environmental Sciences in 2022. All these courses, although across disciplinary compartments, have enriched the study of sustainability at LASU.



In addition to its courses and programmes, several conferences on the issue of sustainability have been organised by different faculties. In December 2022, however, the University established the Lagos State University Centre for the Actualisation of the United Nations' Sustainable Development Goals (LASU-SDG) to harmonise the University's response to the issue of sustainable development. Aimed at supporting the University and its partners in achieving the 17 SDGs, the mission of the LASU-SDG includes the coordination of activities for the actualisation of the SDGs, generating the required funds, grants, and endowment for the University, engaging in networking activities with relevant governmental, non-governmental and private sector actors, facilitating local and international collaborations, organising conferences and publishing research on the sustainability question among other issues.

Although all these activities and programmes have contributed to strengthening LASU's position on sustainability issues, a claim supported by the University's top position on the Universitas Indonesia's GreenMetric Global Ranking in Nigeria and Africa since 2022, the need for a guiding document remains invaluable. Not only is such document relevant for linking the disperse measures currently activated in LASU but it will offer a framework for building on the University's achievements. It is against this background that this Sustainability Policy is developed. It is borne out of the University's vision to be a leader in research, teaching and community service. This policy also aims to complement existing University policies such as the Research Policy introduced in 2019, and the Research Ethics Policy launched in 2020.

## **2. Purpose**

The Sustainability Policy aims to foster a sustainable environment on the LASU campus and contribute to sustainable development at the state, national, and international levels through its research, teaching and community service.

## **3. Vision:**

The vision of the LASU Sustainability Policy is nine-fold and these include to:

- (a) Increase the awareness of sustainability on the LASU campus.
- (b) Synchronise the University's responses to the sustainability question.
- (c) Introduce incentives and mechanisms to promote interdisciplinary community engagement, teaching and research on sustainability.
- (d) Equip students, staff, and management with the necessary framework for practicing sustainability on campus.
- (e) Publicise the University's approach to engaging sustainability.
- (f) Support students and staff to reduce their carbon footprint and increase their carbon handprint.
- (g) Provide a framework for engaging local and international partners on sustainability.

- (h) Promote and invest in the development of technologies and strategies that promote sustainable development.
- (i) Highlight the strategies for evaluating LASU's sustainability plans.

#### **4. Scope**

This Sustainability Policy covers the entire University. It supports both the teaching and non-teaching structure within LASU as well as the processes and relationships therein. It will also guide the relationship and collaborations between the University and other stakeholders within and outside Lagos and Nigeria.

#### **5. Definitions**

The definition of sustainability and sustainable development is not without its contestations and contradictions. However, this Policy adopts the following definition of sustainability and sustainable development.

- (a) Sustainability is defined as:
  - i. an approach to teaching, research, and community service that promotes and protects human and natural resources for the current and future generations,
  - ii. efforts that allow for the flourishing of the individual, group, plant, animal, and non-living things, and
  - iii. advancement in knowledge that interlinks environmental, social, economic, and other concerns.
- (b) Sustainable development is an approach to comprehensive human and environmental advancement that acknowledges the need to protect human, environmental and natural resources for the current and future generations in a manner that allows for the flourishing of the individual, group, plant, animal, and non-living things.

#### **6. Philosophy**

The University's approach to sustainability is rooted in collective developmentalism. By being collective, the University considers sustainability as a practice that requires the involvement of all stakeholders including staff, students, management, and businesses within LASU as well as partners outside the University. By being developmental, the University engages sustainability as a tool and holistic process to drive current and future development. It is not considered as anti-development but rather an approach that reimagines development as a considerate process and reflection that accounts for not only the current but future generations.

Our core objectives include:

1. **Promoting Excellence and Innovation:** We aim to foster cutting-edge research and innovative practices in sustainable development.
2. **Serving as a Leadership Hub:** The University will be a nucleus for leadership in sustainability, setting standards and disseminating best practices.

3. **Regional Advocacy:** Through academic conferences, symposia, and publications, we will lead regional advocacy efforts in sustainable development.
4. **Engaging Stakeholders:** We will build robust partnerships with public and private sector stakeholders to enhance capacity and drive sustainable development initiatives.

## **7. Institutional mechanisms**

This policy aligns seamlessly with the strategic goals of Lagos State University and its commitment to contributing positively to regional and global sustainability agendas. To achieve its goals, the University will use some tools to achieve its sustainability objectives. Among the tools that will be used to promote sustainability are the following mechanisms:

**7.1. Governance and disciplinarity:** Sustainability will be incorporated across disciplines. This will be implemented in a manner that encourages disciplines to report whether their courses engage sustainability – and if they do, how their courses address the issue. In doing this, it is recognised that while some courses are more amenable to sustainability, others less connected.

**7.2. General Course on Sustainability:** To ensure that all students are exposed to sustainability before their graduation, courses in – or a full course on – sustainability will be offered by the Centre for General Nigerian Studies.

**7.3. Cross-disciplinarity:** Students should be encouraged to take courses on sustainability. As such courses in Geography, Environmental Sciences, and the Centre for Environmental and Sustainability Studies (CESSSED), need to be popularised and adapted for more students from other disciplines to offer.

**7.4. Power management:** To ensure that minimal power is used, energy-saving bulbs and low energy-consuming devices would be encouraged across the University. Students and staff would also be encouraged to switch off lights when not in use. The University would also invest more in renewable energy like solar to reduce cost as well as the University's carbon footprint. The University will also collaborate with individuals and groups on developing renewable energy on campus.

**7.5. Education, Teaching and non-teaching interface:** The University will develop and expand education for sustainability within the curriculum, about both the content and manner of delivery. All students will be empowered with the skills and knowledge to contribute to a sustainable future. Periodic interface between the teaching and non-teaching staff on promoting sustainability must be encouraged. This interface will be an opportunity for staff in the Department of Works, for instance, to engage with their colleagues in faculties on how to promote sustainability on campus.

**7.6. Incentives:** The University will strive to introduce incentives to support research on sustainability. This will include the periodic introduction of fellowships. These fellowship opportunities will focus on diverse issues of sustainability. There will also be the award of sustainability champions to encourage and motivate students and staff members who promote

sustainability. Incentives will also be provided to private sectors providing conventional or electric bikes and electric vehicles on campus.

**7.7. Recycling and waste management:** The University will promote efforts towards the development of a circular system. This will include promoting recycling and an environmentally friendly waste management system. There will be sensitisation on water usage.

It will encourage staff and students in the sciences and engineering disciplines to collaborate on the development of small-scale waste-to-power projects. Students and staff will be encouraged to use recyclable materials for eating and drinking. Waste sorting will also be strengthened in partnership with stakeholders within and outside LASU.

**7.8. Student clubs and activities:** The University will encourage students to deepen their knowledge and engagement in sustainability. The existing LASU SDG Youth Club will be supported to expand, and new student-led initiatives and activities will also be encouraged across all campuses.

**7.9. Transportation:** The University will develop and implement an integrated green travel policy that promotes and supports active travel and those methods with least environmental impact and also considers reducing the need for staff and students to travel, drawing on digital solutions. The University will promote cleaner transportation on campus. This will include free parking for visitors using electric vehicles. The University will also promote cycling on campus as well as electric buses on campus. Incentives and data-driven reintroduction of bikes on LASU campus will be encouraged.

#### **7.10. Awareness and Governance**

Concern for sustainability issues is a matter of both individual and collective responsibility within the University and must be explicitly acknowledged and accounted for at all levels of management and operation. The University is committed to:

- raising performance across three priority academic themes of “sustainability and net zero”, “population health and wealth” and “equity and inclusion”
- using resources efficiently to minimize our impact on the environment
- complying with all relevant legislation and regulations
- raising awareness within the University community about sustainability issues and securing the well-being of staff and students
- embedding sustainability into the design and operation of all our activities
- engaging with the wider community to raise awareness of sustainability and contributing to ways of creating a more sustainable society, locally and globally.

#### **7.11. Research**

We will build strength on our areas of research to tackle the pressing problems facing the world, with a global and local focus that includes health and wellbeing, sustainability, and the just transition. This work will seek innovative and practical solutions and be developed in line with the United Nation’s Sustainable Development Goals. Our research activity will be undertaken regarding the need to ensure more sustainable ways of working, including achieving reductions in the consumption of energy, water, and raw materials.

### **7.12. Campus**

The University will develop and maintain our campuses in a sustainable way, with particular regard to energy and water efficiency, biodiversity, waste and life cycle costs and impacts. This requires an assessment of what we do on campus and how we do it, adopting a whole life strategy for the built environment, including furnishings and equipment, with consideration of “cradle to cradle” circular economy principles wherever possible and we will work collaboratively with partners to influence and deliver change.

### **7.13. Procurement**

The University will adopt clear and effective sustainable procurement policies, promoting the circular economy and considering all stages of the supply chain and life cycle. This will include sustainable food and Fair-Trade policies.

### **7.14. Investment and Finance**

The University will intentionally invest in companies whose activities are in direct conformity with the values that the University publicly espouses and when investing its funds in this regard will lead to social, environmental, sustainability and governance benefits. The Ethical Investment Policy will set out the restrictions that should accordingly be applied and the University will endeavour to ensure that any third-party Fund Manager follows the United Nations Principles of Responsible Investment and meets the Lagos State Investment Policy on PPP and the Lagos State Public Procurement Law of 2021

### **7.15. Integration**

To reduce the University’s negative impact on the environment and enhance its contribution to sustainable development we will consider all aspects of what we do and how we do it. Sustainability is not the responsibility of the named officers, units or committees, but of all staff and students. New ways of working in the long and short term must be explored and adopted to operate more sustainably, placing reduced demand on natural resources, using resources efficiently, promoting the circular economy and enhancing biodiversity on campus and beyond.

## **8. Partnership and collaborations**

The University will provide support to staff and students to enter partnerships and collaborations with stakeholders within and outside Lagos State and Nigeria. This support will include a dedicated staff in the LASU-SDG Office to provide the necessary support to staff and students.

## **9. Community engagement**

LASU’s administration is in Ojo and with campuses in Ikeja and Epe. Sustainability entails that the University also ensures a stable and mutually beneficial relationship with its immediate and extended communities. The University will encourage cordial relationships with stakeholders.

## 10. Evaluation

The University's efforts to support sustainability will be periodically evaluated using indicators that will be designed to measure specific elements such as interests, research, internal and external collaborations and teaching.

**11. Campus town halls and surveys:** To gauge the feelings of students and staff on campus, town halls and surveys to measure sustainability and invite ideas from constituents will be conducted. These engagements with students and staff will enable us to periodically scan the institution and its community for the extent to which interventions have been useful and identify areas of possible improvement and adjustment.

**12. Annual 'shout-outs':** Units, Departments, Faculties, Schools, and campuses in the University will be encouraged to map and report all the events related to sustainability and sustainable development they have held within the year. These shout-outs will enable the University to identify areas of strength and those requiring incentives and support.

**13. Sustainability reports:** The LASU-SDG Office will produce an annual and biennial sustainability report. The annual sustainability reports (ASR) will document the achievements, collaborations, and challenges of LASU in its quest to promote the actualisation of sustainable development in all the campuses of the University, Lagos State and Nigeria. The biennial sustainability reports (BSR) will highlight the efforts at addressing the challenges in the preceding years. While the ASR will be presented to the management, the BSR will be presented to the University Senate.

**14. UI GreenMetric Ranking:** The University has been participating in the UI GreenMetric World University Ranking since 2022. Unlike the conventional University rankings, this ranking was initiated in 2010 by the Universitas Indonesia or University of Indonesia (UI) to promote sustainability on University campuses. The ranking takes account of indicators like energy and climate change, waste, setting and infrastructure and water, among others. The performance of LASU on this unique ranking system will serve as another means to evaluate the University.

## 15. LASU-SDG Champions

To facilitate evaluation, surveys and sustainability reports, the University has established the LASU-SDG Champions. A LASU SDG Champion is that staff who is passionate about the Sustainable Development Goals and ready to contribute vigorously to its implementation for the betterment of the University and its environs. The champions are selected by each Faculty, Department and Units (FDUs) in the University and coordinated by the LASU Centre for SDGs. They are to assist in getting 'Accurate Data Tracking and Monitoring' towards improving the usefulness and comparability of sustainable information and decision-making on sustainable action by the University. They send their quarterly reports to the Centre through a designed form. (Ref. Annex I)

## 16. SDGs and Associated FDUs (Faculties, Departments & Units)

Objectives:

- ▶ 1. Identify SDG champions within each Faculty, Department & Unit.
- ▶ 2. Integration of LASU's Development Plan (Vision and Mission) into the SDGs
- ▶ 3. Alignment of SDGs indicators across relevant FDUs

- ▶ 4. Monthly dialogue meetings on SDGs data tracking with the champions
- ▶ 5. Sustainability Assessment Report & Surveys.

The following are the seventeen United Nations Sustainable Development Goals and the Faculties, Departments and Units responsible for the implementation of the SDGs. The list of FDUs that are nominating the Champions is found in **Annex II**.

	<b>SDGs</b>	<b>RESPONSIBLE FDUs</b>
1.	<b>No Poverty</b>	<b>Directorate of Entrepreneurship, ICT, Students Affairs, All Departments</b>
2.	<b>Zero Hunger</b>	<b>Faculty of Agriculture, Directorate of Entrepreneurship, Fisheries Dept.</b>
3.	<b>Good Health &amp; Well being</b>	<b>LASUCOM, Health Centre, Students Affairs, ASE, NASE, Department of Psychology, Sports Centre</b>
4.	<b>Quality Education</b>	<b>All Faculties, All-Academic Centres, Exams &amp; Records, ICT, Academic Planning, University Library,</b>
5.	<b>Gender Equality</b>	<b>CRPSGBV, Students Affairs, ASE, NASE,</b>
6.	<b>Clean water and Sanitation</b>	<b>Works &amp; Services, LASU Waterworks, All Faculties and Administrative Buildings</b>
7.	<b>Affordable energy</b>	<b>Works &amp; Services, Faculty of Engineering</b>
8.	<b>Decent Work and Economic Growth</b>	<b>All Faculties, ASE, NASE</b>
9.	<b>Industry Innovation and Infrastructure</b>	<b>Faculty of Management Sciences, Faculty of Engineering, Works and Physical Planning</b>
10.	<b>Reduced Inequalities</b>	<b>Faculty of Social Sciences, Students Affairs, CRPSGBV,</b>
11.	<b>Sustainable Cities and Communities</b>	<b>Centre for Planning Studies, Dept. of Geography &amp; Planning, School of Transport,</b>
12.	<b>Responsible Consumption and Production</b>	<b>Faculty of Engineering, School of Agriculture, Works, and Physical Planning</b>
13.	<b>Climate Action</b>	<b>Department of Geography &amp; Planning, CESSED</b>
14.	<b>Life Below Water</b>	<b>Faculty of Science, CESSED, Fisheries and Agriculture</b>
15.	<b>Life on Land</b>	<b>Faculty of Science, CESSED, Fisheries, Agriculture, Works and physical planning.</b>
16	<b>Peace, Justice, and Strong Institutions</b>	<b>Faculty of Law, Counselling Unit, Students Affairs,</b>
17.	<b>Partnerships for the Goals</b>	<b>All MDAs/ Offices</b>

## 17. Initiative Mapping to SDGs

This mapping will be used to measure the implementation, outcome and impacts of all projects and activities relevant to SDGs in relevant Faculties, Departments & Units in the University. The objective is simply -Tracking data that speaks to SDGs at Lagos State University.

SDG	THEMES	INITIATIVES	OBJECTIVES	IMPACT	FDUs
<b>SDG: 1 NO POVERTY</b>	Economic Empowerment	Empowerment Programmes	To address the underlying drivers of poverty, including limited access to finance, lack of technical skills	Undergraduates and Retiring Staff	Student Affairs, Pension unit
	Capacity Building	Short-term skill acquisition Training Programme for students and prospective retirees	i. Capacity building for the vulnerable ii. To prepare students for life after campus. iii. To prepare retirees for life after retirement	Undergraduates and Retiring Staff	Directorate of Entrepreneurship
	Economic Empowerment	Students Loan Programme	To create affordable access to funding for students who are unable to support themselves while in school (School fees, daily living allowances)	Undergraduates' students	Student Affairs
	Economic Empowerment	Student Scholarship Programme	To award scholarships for high-flying students, disabled, vulnerable students	Assist indigent students and encourage scholarship	Student Affairs
	Social Protection	Social Welfare Integrated Program	Focused on the needs of the most vulnerable students (food packages, books, and stationaries)	University Staff and Students	Directorate of Staff Welfare



SDG	THEMES	INITIATIVES	OBJECTIVES	IMPACT	FDUs
<b>SDG: 2</b>  <b>Zero Hunger</b>	Empowerment	Agriculture Empowerment Programme	i. To train/improve skills in agriculture (both staff and students) ii. To improve livelihoods	Students / Retirees to be impacted	Faculty of Agriculture, Directorate of Entrepreneurship,
	Food Security	Capacity Building Programme in Fisheries	i. Training in modern aquaculture ii. access to fishponds for the breeding/propagation of fish on Epe campus  Access to farmland for crop production	i. Training in modern aquaculture ii. access to fishponds for the breeding/propagation of fish on Epe campus  Students / Retirees to be impacted	Faculty of Agriculture, Directorate of Entrepreneurship  Faculty of Agriculture, Directorate of Entrepreneurship
	Farming Cooperatives		Fisheries  Farming Cooperatives	Access to farmland for crop production  Starting cooperatives that are agriculture-based to facilitate food production	Students / Retirees to be impacted  Students / Members of Staff

SDG	THEMES	INITIATIVES	OBJECTIVES	IMPACT	FDUs
<b>SDG: 3</b>  <b>Good Health and Wellbeing</b>	Health Outcomes	Health for All	Plan for all Staff and students to have access to quality, equitable and affordable healthcare	Enrolment of all staff and students in the Healthcare programme of the University	Health Centre, LASUCOM, Student Affairs, ASE, NASE
	Health Professionals	LASU Healthcare scheme  Health Insurance Scheme	Recruitment of Healthcare professionals in line with world standard of carer to patient ratio.  In line with the Lagos State Health Insurance Programme	Prompt response to emergencies and other health issues  All members of staff and Students	Health Center, LASUCOM, LASG  Health centers, LASUCOM
	Wellbeing	In-Patient/Out-patient services	To expand the existing facilities to cater for more people	Access to healthcare	Department of Psychology

		Emotional and Psychological Wellbeing	Provision of Psychology services/consultations	To provide psychotherapy support to members of the university community	Sports Centre, Department of Human Kinetics
		Sport Services	i. Well-equipped gymnasium to promote wellness. ii. promotion of sporting activities, competitions	Promote mental and physical fitness for staff and students	Sports Centre, Department of Human Kinetics

SDG	THEMES	INITIATIVES	OBJECTIVES	IMPACT	FDUs
<b>SDG: 4</b>	World Claas Education	Digital Teaching and Learning	Mobile learning devices, internet accessibility, e-books on core courses	Improve the quality of lecture delivery and assimilation	All Faculties (Academic units)
		In-School Jobs	Promotion of students' access to job opportunities on campus	Generating personal income for students	Directorate of Entrepreneurship
<b>Quality Education</b>	Promoting Research	Conducive research Environment	To promote research activities among both staff and students	Quality of research output	All faculties (Academic units)
		Research Fair	Showcase research efforts of scholars	Promote innovations and patents	Directorate of Research and Innovation
		Research Contests	To engage students in competitive research projects with the aim of improving research quality.	Promote interest in research and improve research skills	Directorate of Research and Innovation, Student Affairs
		Research Grants	To create increased avenues for accessing national and international research grants	Improve the rating of the University	Directorate of Special Intervention, Directorate of Research, and Innovation

<b>SDG</b>	<b>THEMES</b>	<b>INITIATIVES</b>	<b>OBJECTIVES</b>	<b>IMPACT</b>	<b>FDUs</b>
<b>SDG: 5 Gender Equality</b>	Gender-based Violence	LASU Gender Policy	Zero tolerance for gender-based violence ii. provision of counselling, psychosocial support, legal and medical emergencies in cases of violence/ physical assault and rape	Creates awareness and reduces gender violence. Promote equality of gender and prevent abuse on campus	CRPSGBV, Counselling Unit, Health Centre, Department of Psychology,
	Equal access	LASU Gender Policy	No discrimination in student enrolment, roles, and responsibilities	No discrimination in student enrolment, roles, and responsibilities	Admission Office, Student Affairs,
		Girl-Child Education	Encourage girl-child education at all levels in the university.	Promote equality of gender	Faculty of Education, Counselling unit
Equal Access	LASU Creche / Nursing Rooms	To support students and staff members who are nursing mothers with the opening of a creche on campus	Improve productivity at work and access to childcare	Health Centre	

<b>SDG</b>	<b>THEMES</b>	<b>INITIATIVES</b>	<b>OBJECTIVES</b>	<b>IMPACT</b>	<b>FDUs</b>
<b>SDG: 6 Clean water and Sanitation</b>	<b>Clean water and Sanitation</b>	<b>Clean water and Sanitation</b>	i. Production of potable water on campuses ii. Upgrade LASU Waterworks 8	Improve Access to Potable Water and reduce water-borne diseases	LASU Waterworks, Works Department
		Clean Environment	i. Construction of more toilets and washing handstands. ii. Provision of waste bins	Reduce pollution and improve disposal of faeces	Dept of Public Health
	Sanitation Services	Landscaping	Beautification of the LASU environment	Improve the aesthetic value of the environment and Eco-friendly	Works and physical planning

<b>SDG</b>	<b>THEMES</b>	<b>INITIATIVES</b>	<b>OBJECTIVES</b>	<b>IMPACT</b>	<b>FDUs</b>
<b>SDG: 7 Affordable Energy</b>	Access to reliable and Clean Energy	LASU Solar Project	Generate power from renewable sources and close energy gaps	Reduce environmental pollution	Works Department, Faculty of Engineering
		No Emissions	Promotion of Intra-Campus bicycle rides	Reduce pollution	School of Transport

<b>SDG</b>	<b>THEMES</b>	<b>INITIATIVES</b>	<b>OBJECTIVES</b>	<b>IMPACT</b>	<b>FDUs</b>
<b>SDG: 8 Gender Equality</b>	Capacity Building	Training / Workshops on skill acquisition	To promote the acquisition of skills to prepare students for life after school	i. Reduction in the unemployment rate ii. Improvement of sources of income iii. Prepare staff for retirement	Directorate of Entrepreneurship, Student Affairs
	Job Opportunities	Job Hub	i. Provision of job search/recruitment services for prospective graduates ii. Training graduating students on interviews, job search	To impact all graduating students	Directorate of Entrepreneurship, ICT, Student Affairs
	Capacity Building	Professional Training	Encourage students' enrolment in professional qualification examinations. Such as ICAN, ACCA etc.	Improve manpower and capability of students	All Faculties and Student Affairs
	Grants and Collaborations	Research Hub	To transform LASU into a research hub by promoting ease of access to grants and fellowships	All academic Staff and Graduate students	Postgraduate School, Directorate of Research and Innovations, Directorate of ICT

<b>SDG</b>	<b>THEMES</b>	<b>INITIATIVES</b>	<b>OBJECTIVES</b>	<b>IMPACT</b>	<b>FDUs</b>
<b>SDG: 9 Gender Equality</b>	Trade Development	Trade / Research Fairs	To encourage Innovations	Improve the income of members of the university community and vendors	LASU Ventures, Directorate of Research & Innovations
		LASU Ventures, Directorate of Research & Innovations	To support tech founders and startups among students	To promote innovations in ICT among students	LASU Ventures, Directorate of Research & Innovations,
	Infrastructure Development	Lecture Halls	Provision of adequate lecture rooms to meet the needs of every department/ faculty	Conducive environment for learning	All Faculties
		Lecture Theatres	Provision of adequate lecture theatres to meet the needs of every department/ faculty	Conducive environment for learning	All Faculties, Works, and Physical Planning
		Faculty Buildings	Construction of state- of-the-art faculty buildings	Conducive environment for learning	Works and Physical Planning

<b>SDG</b>	<b>THEMES</b>	<b>INITIATIVES</b>	<b>OBJECTIVES</b>	<b>IMPACT</b>	<b>FDUs</b>
<b>SDG: 10 Reduced Inequalities</b>	Economic empowerment	Access to Loans	To promote access to funds for needs and emergencies	Staff and students	Directorate of Staff Welfare, Student Affairs, University Management
	Equal Opportunities	Enable the Disable	To eradicate discrimination against people living with disabilities	All students and staff with disabilities	Counselling Unit, LASU Health Centre, LASUCOM,

<b>SDG</b>	<b>THEMES</b>	<b>INITIATIVES</b>	<b>OBJECTIVES</b>	<b>IMPACT</b>	<b>FDUs</b>
<b>SDG: 11 Sustainable Cities &amp; Communities</b>	Infrastructure Development	Re-modelling of the Epe Campus	Provision of a conducive environment for teaching and research.	Students and Staff of the University	Works and Physical Planning
	Access to housing	Rent-to-Own Staff Residential Programme	To provide ease of access to homeownership to workers.	Homeownership	Directorate of Staff Welfare.
		Expansion of LASU Staff Quarters	Construction of more university housing for the accommodation of staff members.	Access to standard accommodation for staff	Directorate of Staff Welfare. University Management
		Construction of Students' Hostels	Expansion of available hostel accommodation for students.	Access to good accommodation for students	Directorate of Staff Welfare. University Management

<b>SDG</b>	<b>THEMES</b>	<b>INITIATIVES</b>	<b>OBJECTIVES</b>	<b>IMPACT</b>	<b>FDUs</b>
<b>SDG 12: Responsible Consumption and Production</b>	Waste reduction	Recycling	Reduce waste on campus	Clean environment	Public Health Dept
	Paperless Policy	Digitalization of documents.	to reduce dependency on the use of paper and therefore reduce the felling of trees (deforestation).	Protection of the vegetal cover in the environment	All faculties, Units, Directorate, ASE, NASE,
		Construction of Students' Hostels	Expansion of available hostel accommodation for students.	Access to good accommodation for students	Directorate of Staff Welfare. University Management

<b>SDG</b>	<b>THEMES</b>	<b>INITIATIVES</b>	<b>OBJECTIVES</b>	<b>IMPACT</b>	<b>FDUs</b>
<b>SDG: 13</b>  <b>Climate Action</b>	Tree Planting	Planting Beneficial Trees	Coconuts, Orange, Mango etc.	Eco-friendly environment	Parks and Garden, Agriculture. Botany Dept
	Climate change awareness	Climate change seminars and public discourse programme	Create awareness of the implications of climate change with the goal of promoting mitigation and adaptative strategies.	Inclusive participation of the university community and immediate environment in Climate change issues	CESSED, Department of Geography and Planning,

<b>SDG</b>	<b>THEMES</b>	<b>INITIATIVES</b>	<b>OBJECTIVES</b>	<b>IMPACT</b>	<b>FDUs</b>
<b>SDG: 14</b>  <b>Life Below Water</b>	Aquaculture	Fish breeding	Improve food production	Improve well being	Improve well being

<b>SDG</b>	<b>THEMES</b>	<b>INITIATIVES</b>	<b>OBJECTIVES</b>	<b>IMPACT</b>	<b>FDUs</b>
<b>SDG: 15</b>  <b>Life on Land</b>	Wildlife	LASU ZOO	Establishment of a zoo for both teaching and commercial purposes	Improve teaching and learning, Generate income	Dept of Zoology
	Botanical Garden	LASU Botanical Garden	Establishment of a biological garden for teaching and commercial purposes	Improve teaching, learning and research	Dept of Botany

<b>SDG</b>	<b>THEMES</b>	<b>INITIATIVES</b>	<b>OBJECTIVES</b>	<b>IMPACT</b>	<b>FDUs</b>
<b>SDG: 16</b>  <b>Peace, Justice, and Strong Institutions</b>	Fairness and Equity	Disciplinary Committee	Inculcate the spirit of fairness among staff and students	Promote fairness, justice and equity for all staff and students	Student Affairs, University Management, Faculty of Law, Disciplinary Committee

<b>SDG</b>	<b>THEMES</b>	<b>INITIATIVES</b>	<b>OBJECTIVES</b>	<b>IMPACT</b>	<b>FDUs</b>
<b>SDG 17: Partnerships for the Goals</b>	Partnerships for the Goals	LASU SDG Students Club	i. To enable students to learn, engage and act.  ii. To promote the SDGs leadership training programme	Train students on SDGs	SDG Office
		SDGs Grant Competition	To stir up thoughts, actions and ideas that will advance the SDGs	Promote interest in SDGs, Skill acquisition and innovations	SDG office and Directorate of Linkages

## **18. Conclusion**

The Policy Statement and its progress toward meeting its objectives will be reviewed periodically by the University Management, chaired by the Vice Chancellor, receiving reports from the University's Centre for Sustainable Development Goals chaired by the Director.



**ANNEX I. Data collection form**  
**Sustainable Development Goals Review**  
 (SDG Champions Only)

Name:	
Name of Faculty/Department/Unit (FDU)	
Period of Report	

**1. Students' Information:** (Population, Gender, Status, Performance etc.)

Serial Number	Level	Population	Gender		Physically Challenged (Number)
			Male	Female	

**2a. Academic Staff Data:** (Staff Population, Gender, Status etc.)

Serial Number	Status of Academic Staff	Population	Gender		Physically Challenged (Number)
			Male	Female	

**2b. Non-Academic Staff Data:** (Staff Population, Gender, Status etc.)

Serial Number	Status of Non-Academic Staff	Population	Gender		Physically Challenged (Number)
			Male	Female	

**3. Activities in the FDU during the Assessment Period** (Seminars, Conferences, Outreach, Research Fair, Workshops, Partnerships, MOUs etc.)

Serial Number	Type of Activity	Who were the Participants	Outcome measures		Impact of Activity
			Was the Goal met?	Yes No Unclear	

**4. Services** (Water, Sanitation, Electricity, Health, Sports etc.)

Serial Number	Type of Service	Description of Performance	Improvement Update	Impact of Activity

**5. Report on Infrastructure Development** (Building Projects, Road projects, etc.)

Serial Number	Type of Infrastructure	Description of Infrastructure	Start and End Date	Sponsors

**6. Feedback** (Needs and Desired Improvements - NDI)

Serial Number	Type of NDI	Description	Suggestions	Further Comments

## ANNEX II.

### LIST OF FDUs IN THE UNIVERSITY

S/N	FACULTIES, DEPARTMENTS & UNITS
1	COLLEGE OF MEDICINE
2	FACULTY OF ARTS
3	FACULTY OF EDUCATION
4	FACULTY OF LAW
5	FACULTY OF SCIENCE
6	FACULTY OF SOCIAL SCIENCE
7	FACULTY OF MANAGEMENT SCIENCE
8	SCHOOL OF TRANSPORT & LOGISTICS
9	POSTGRADUATE SCHOOL
10	FACULTY OF COMMUNICATIONS AND MEDIA STUDIES
11	FACULTY OF ENGINEERING
12	SCHOOL OF AGRICULTURE
13	FACULTY OF BASIC MEDICAL SCIENCES
14	FACULTY OF CLINICAL SCIENCES
15	FACULTY OF DENTISTRY
16	FACULTY OF TOURISM, FILM & CULTURAL STUDIES
17	STUDENT AFFAIRS
18	REGISTRAR'S OFFICE
19	BURSARY
20	UNIVERSITY LIBRARY
21	LASU INTERNAL AUDIT
22	CENTRE FOR PLANNING STUDIES
23	CENTRE FOR GENERAL STUDIES
24	HEAD OF CAMPUS OFFICE (EPE)
25	LASU SCHOOL OF BASIC STUDIES -BADAGRY

26	SANDWICH PROGRAM (OJO CAMPUS)
27	LASU MBA PROGRAMME
28	SCHOOL OF PART-TIME STUDIES
29	ACADEMIC PLANNING
30	DEPUTY REGISTRAR VICE CHANCELLOR'S OFFICE
31	CENTRE FOR INFORMATION & PUBLIC RELATION
32	DIRECTORATE ICT
33	LASU MULTI-MEDIA
34	CENTRE FOR AFROBRAZILIAN STUDIES
35	SPECIAL INTERVENTIONS
36	CRPSGBV
37	DIRECTORATE OF RADIATION MONITORING&PROTECTION SERVICE
38	DIRECTORATE OF ADVANCEMENT
39	LASU SPORTS CENTRE
40	LASU MUSUEM
41	HEALTH SERVICES
42	WORKS &PHYSICAL PLANING
43	DEPUTY REGISTRAR'S OFFICE NON TEACHING ESTABLISHMENT
44	DEPUTY REGISTRAR'S OFFICE ACADEMIC STAFF ESTABLISHMENT
45	DEPUTY REGISTRAR'S OFFICE LEGAL UNIT
46	DEPUTY REGISTRAR'S OFFICE PENSION UNIT
47	CSO OFFICE -SECURITY UNIT
48	DEPUTY REGISTRAR'S OFFICE DISABILITY SUPPORT
49	DIRECTORATE OF STAFF WELFARE,TRAINING AND DEVELOPMENT
50	DIRECTORATE OF QUALITY ASSURANCE
51	DIRECTORATE OF RESEARCH AND INNOVATION

